

Tackling Child Poverty: Working Towards 2020

Child Poverty Act

Establishes 4 UK-wide income targets (including material deprivation and persistent poverty, alongside the relative low income measure)

Requires Government to publish UK child poverty strategy within one year of Royal Assent

Requires Government to publish annual progress reports

Establishes a Child Poverty Commission

Places duties on local authorities and partners to co-operate in tackling child poverty

Child poverty means growing up in a low income household

Relative poverty: living in households with less than 60% of median income.

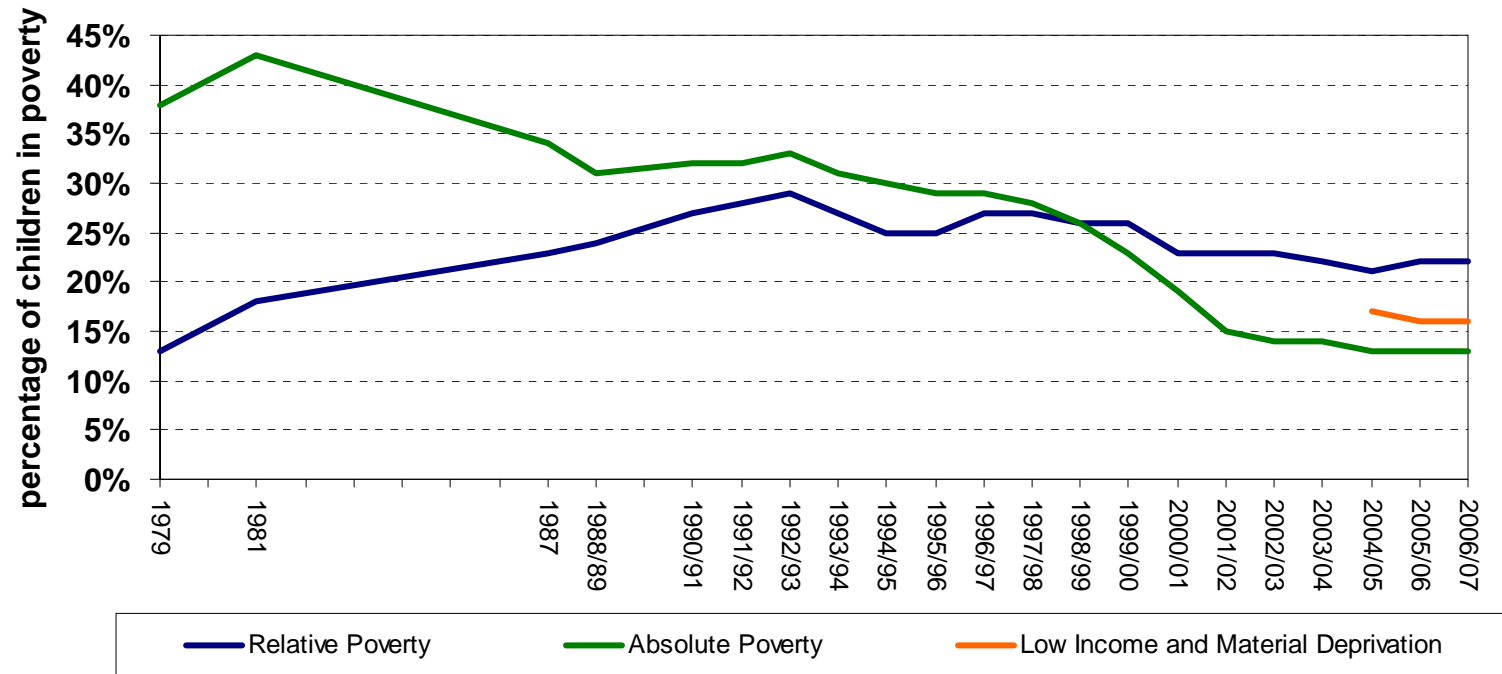
Material deprivation: combination of material deprivation and low income (less than 70% of median income).

Persistent poverty: living in relative poverty for three out of four years.

Absolute poverty: living in families with income below absolute threshold.

2.9m children in the UK are living in poverty

Risk of living in poverty (before housing costs) 1979-2006/07



Economic cost of Child Poverty

The Joseph Rowntree Foundation estimates that Child Poverty costs the country at least **£25 billion a year**, including £17 billion that could accrue to the Exchequer if child poverty were eradicated. Moving all families above the poverty line would not instantly produce this sum. But in the long term, huge amounts would be saved from not having to pick up the pieces of child poverty.

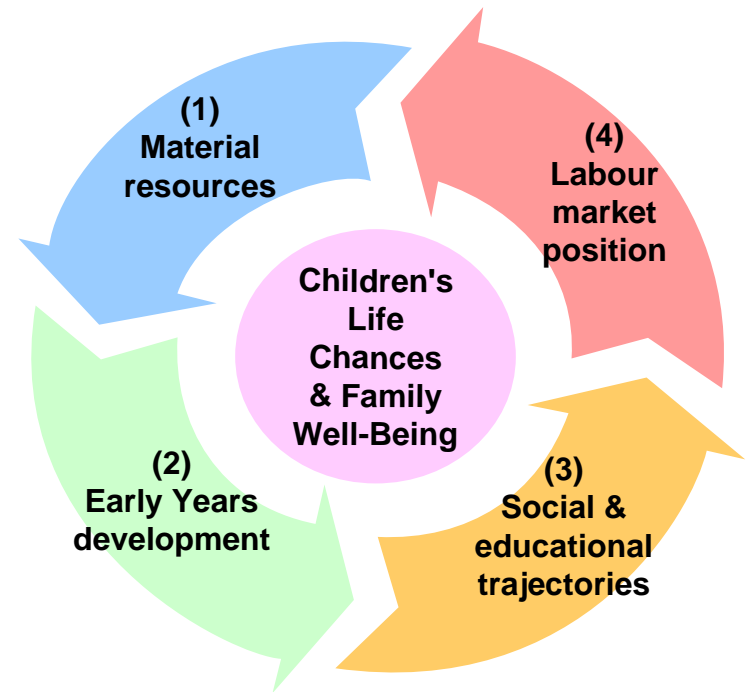
Why income matters: poverty & life chances form an inter-generational cycle

Lack of income and material resources in childhood adversely affect early years development...

...impacting on cognitive, emotional and behavioural capacities and resources, and so shaping social identities and trajectories through education...

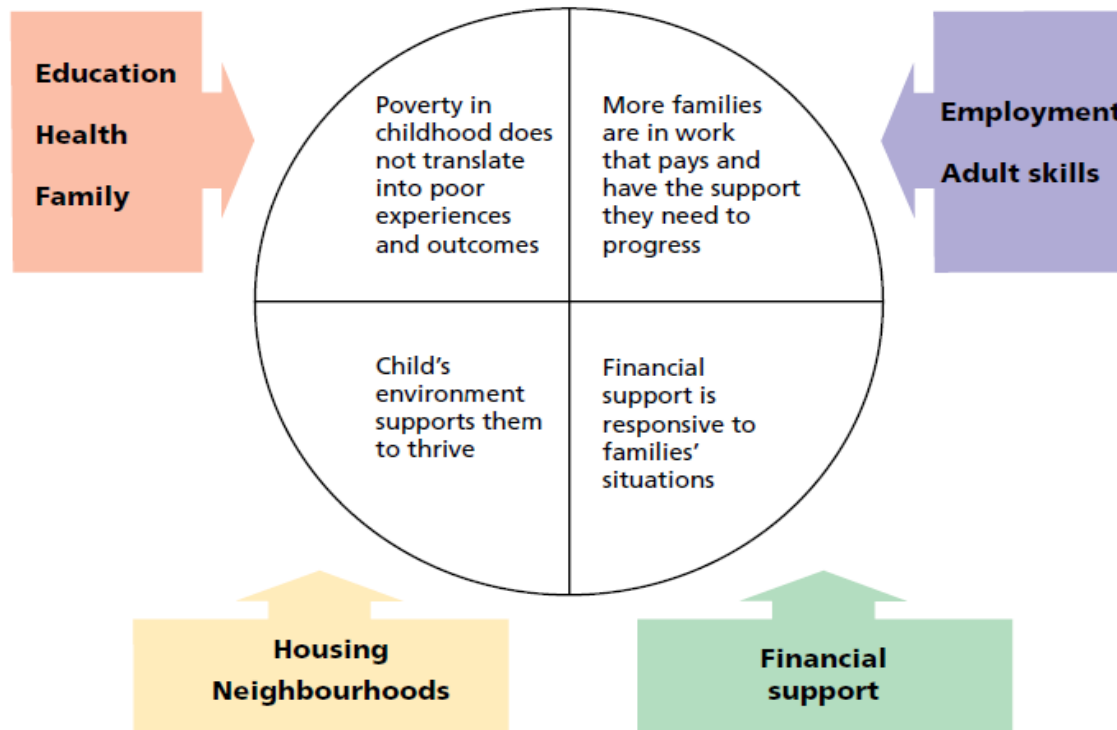
...which in turn increases the risk of precarious labour market position...

...thus increasing the risk of poverty in adulthood



Ending child poverty must be everybody's business

This requires national, regional and local action



The Child Poverty Act establishes the key objectives and main policy areas for UK child poverty strategy

Meet the 2020
Income targets

Minimise socio-
economic disadvantage
for children

LIFE CHANCES

EMPLOYMENT
& SKILLS

PLACE

FINANCIAL
SUPPORT

AT RISK GROUPS

The Strategy will need to:
(a) consider what action is needed in each area in order to meet the targets and minimise socio-economic disadvantage, and (b) assess what progress needs to be made by 2014

It will also need to assess:
(c) which groups are most at risk of poverty and disadvantage; and
(d) consider the impact of policy measures for each group

Which is where local authorities and partners come in...

The Child Poverty Act places new duties on Local Authorities:

Duty on local authorities and their partners to **co-operate to reduce Child Poverty** in their area

Duty to carry out a **Child Poverty Needs Assessment** and to produce a **local Child Poverty Strategy**

Duty for local authorities to take their duty to reduce Child Poverty into account when preparing or revising their **Sustainable Communities Strategy**

Power to issue **guidance** on how these duties should be performed

The Child Poverty Act requires:

National Strategy	Within one year of Royal Assent – i.e. by Spring 2011 based on Royal Assent in March 2010	National Strategy
Local Child Needs Assessment	Expected to be published within 6 months of duties coming into force & in time to feed into the next LAA round, i.e. October 2010, & reviewed every 3 years	Local Child Needs Assessment
Local Child Poverty Strategy	By April 2011 and reviewed when appropriate in line with the Needs Assessment.	Local Child Poverty Strategy

Local Partners

Each of the following partners is named in the Act as a partner authority in relation to the responsible (upper-tier) local authority:

- The district authorities (other than the responsible local authority) who deliver key services including housing benefits and securing local facilities for families.
- The police, youth offending teams, and probation service.
- Transport Authorities.
- Primary Care Trusts and Strategic Health Authorities.
- Jobcentre Plus.

...other relevant partners should also be involved as the local authority sees fit.

Data

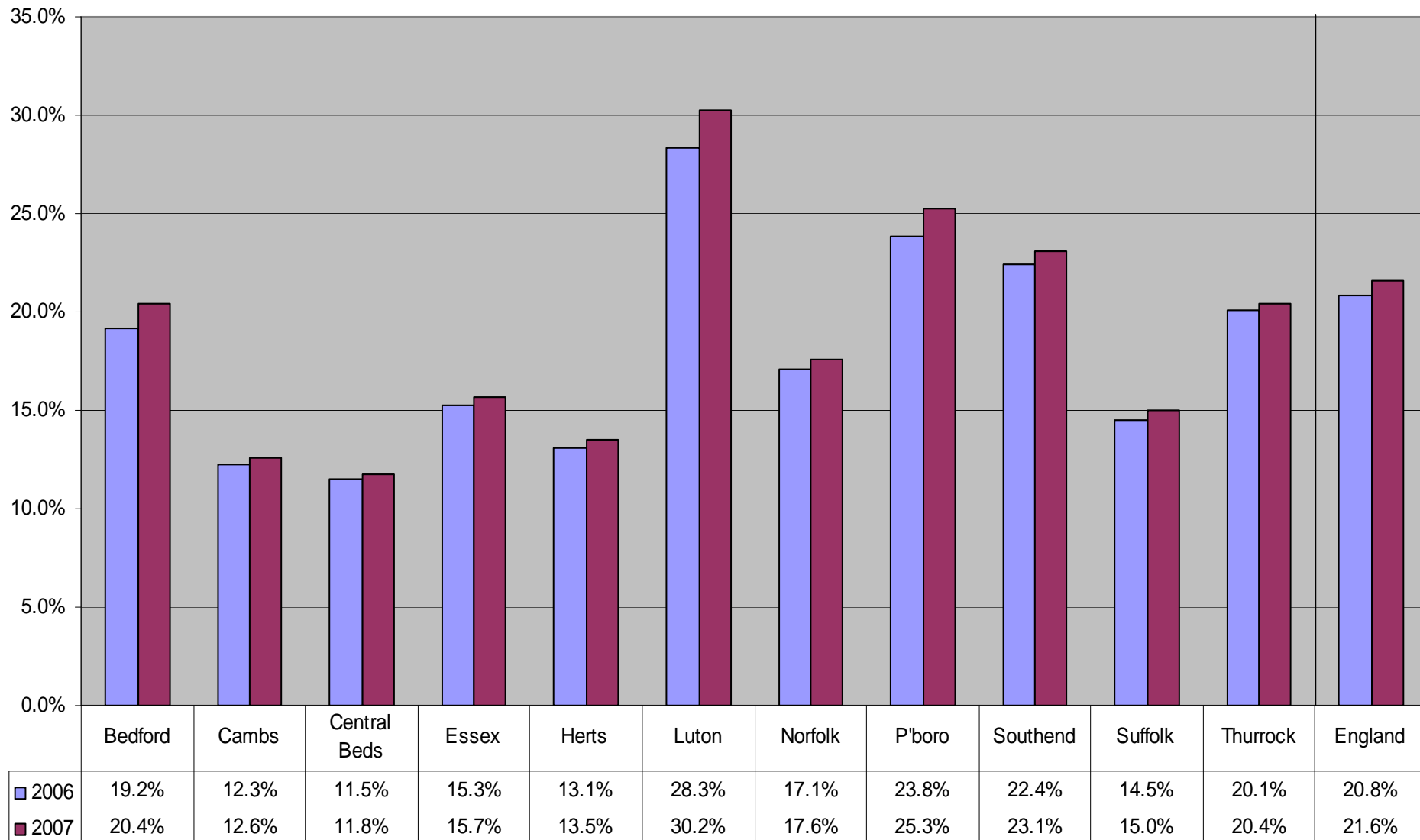
Measuring Child Poverty is not an exact science!

Covered by:

- **PSA 9 (The PSA 9 target is: “Halve the number of children in poverty by 2010-11, on the way to eradicating child poverty by 2020”).**
- **And NI 116 - % of children who live in families in receipt of out of work benefits or in working families with income less than 60% of the median**

The Child Poverty Unit has developed a ‘Basket of Indicators’ to support local partnerships to develop and deliver effective strategies.

Percentage of children in relative poverty by upper-tier local authority



What support is available?

- There is currently a suite of Pilots to test out new and ‘innovative’ ways of tackling child poverty from which learning will be taken

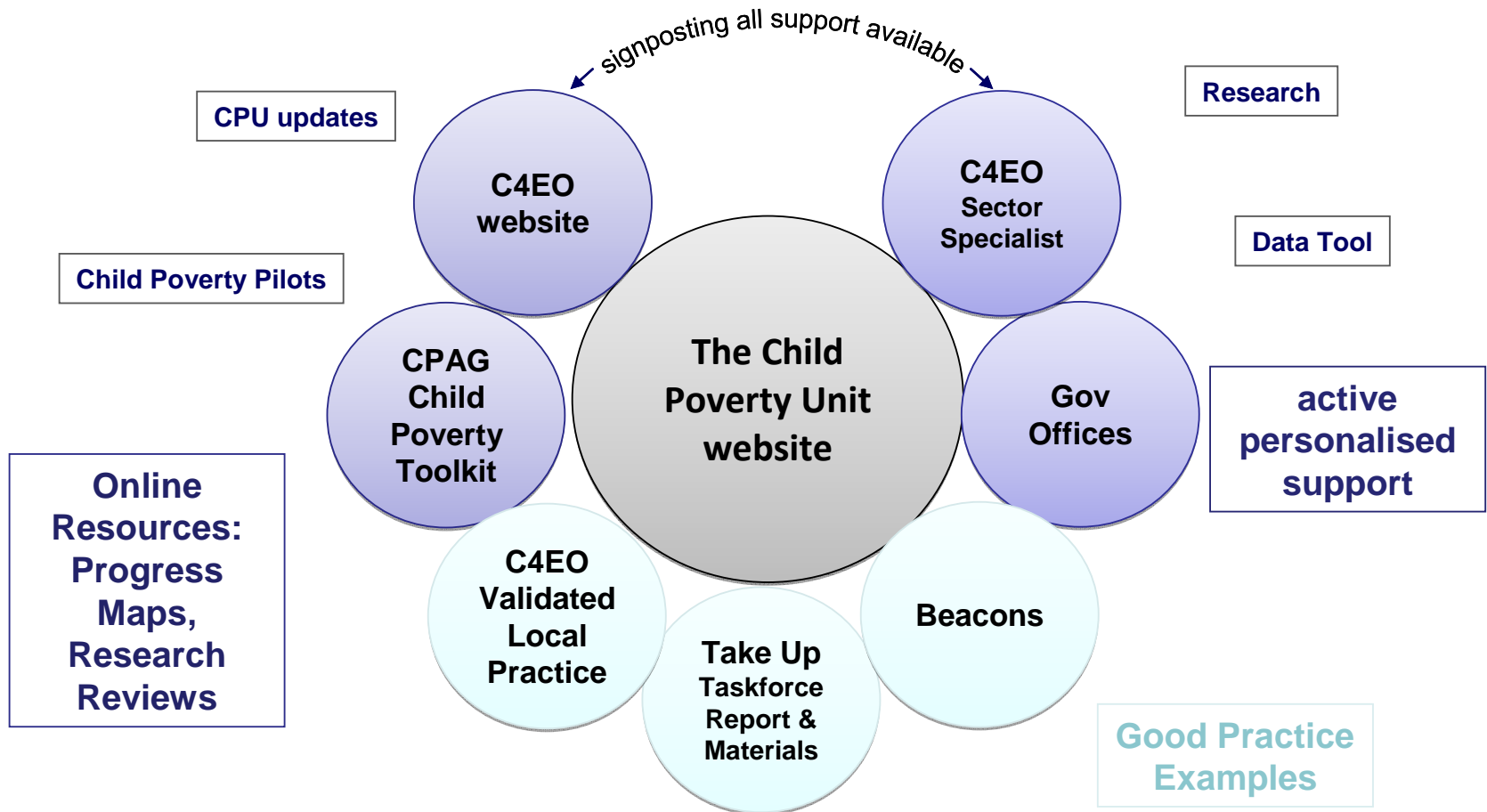
*The pilots have been set up to **enable local authorities to explore pioneering approaches** and discover ways of delivering the best results and make a long-term and sustainable impact.*

Interim reports, case studies and full evaluation reports will become available on the child poverty website:

www.dcsf.gov.uk/everychildmatters/childpoverty

- A ‘core offer’ of support is available

The Core Offer of Support



Beacon Councils – excellence in delivery



Cornwall

Newcastle

Tower Hamlets



Good practice



Case Studies



Dissemination



Networking

What else is on offer?

CPAG toolkit and other voluntary sector support

Child poverty pilots – dissemination of emerging effective practice

Events – Centre For Excellence and Outcomes (C4EO), Beacons, Child Poverty Action Group (CPAG) and regional and local events

Take Up Taskforce – Take Up the Challenge

Support is also available from the Improvement and Development Agency (IDeA) and the Local Government Association (LGA)

To find out more about support visit:
www.dcsf.gov.uk/everychildmatters/childpoverty